



**soft seated
with floating ball
maintenance-free**

**flanged ends
PN 40
DN 15 – 50**

The sealing variants are approved in accordance with the german clear air regulations "TA-Luft 2002"

Fields of application

General industry, power plants, chemical, oil and petrochemical industry

Operating data

Temperature range: -10°C bis +200°C. depending of the operating pressure
see table at page 2

Design

One-piece body, full bore, 90°- swivel fitting.
encapsulated seat rings
ANTI STATIC (as) – feature
Pressure equipment directive (PED) 97/23/EG (category III)
VbF, Gas-HL-VO, WHG
„TA-Luft“ approved
Fire-Safe acc. To BS 67 55 part 2 and ISO 10497
Mounting flange acc. to DIN ISO 5211

Materials [acc. DIN EN (DIN)]

body: casted stainless steel - 1.4408
ball: - 1.4404/1.4408
sealing: (seatings) : - pure TFM

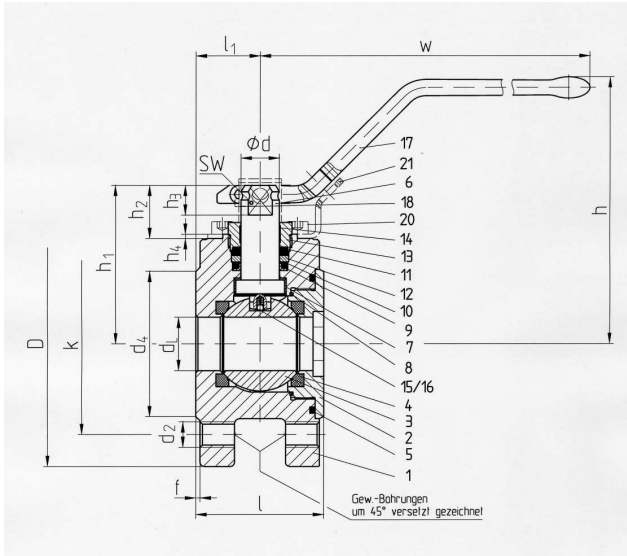
other materials on request

Order specifications

Compact Ball Valve TOPI 510
Nominal diameter(DN)
Nominal pressure (PN)
Operating conditions
Flow media, temperature, max. pressure
Connection acc. to DIN EN
Identification number



VH-Armaturen GmbH


Tabelle 1: Materials

Pos.	item-Nr.	designation	material
1	108	body	1.4408
2	139	screw-in part	1.4408
3	365	ball	1.4404/1.4408
4	515	seat-ring	pure TFM
5	411.1	outer sealing ring, body	Graphite
6	210	stem	1.4462
7	310.2	lower control shaft bearing	PTFE-M
8	411.2	inner sealing-ring, body	pure PTFE
9	413	wedge-facing-ring	pure PTFE
10	503	wedge-ring	Graphite
11	411.3	wedge-ring	Graphite
12	474	thrusting	1.4571
13	544	stuffingbox-screw	1.4571
14	310.3	upper control shaft bearing	1.4401/PTFE
15/16	560	antistatic device	1.4571
17	965	handle	1.4308
18	914.2	allen screw M6x16	A2-70
20	914.1	allen screw M5x20	8.8 gal Zn
21	555	handle-touch/lockable combination	1.4301

Tabelle 2: Dimension and weights

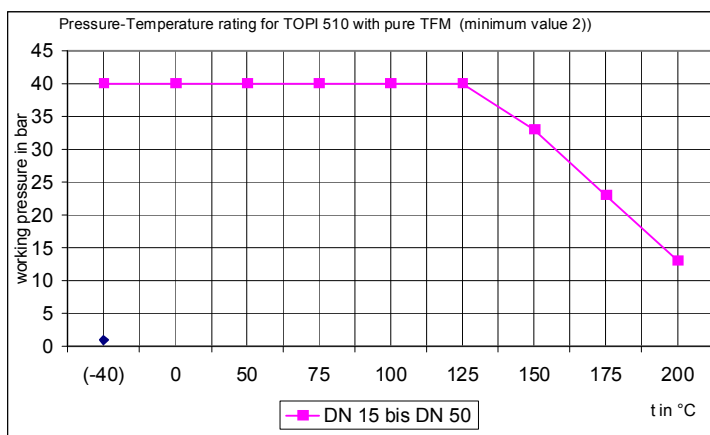
DN	d _L	l	l ₁	w	D	k	z	d ₂	d ₄ x f	h	h ₁	h ₂	h ₃	h ₄	Ød	SW	ISO	weight kg
15	15	50	25	210	95	65	4	M12	45 x 2	106	55	20	9	2	12	9	F04	1,8
25	25	60	30		115	85			68 x 2	126	75	25	14		18	14	F05	3,4
40	40	80	40	282	150	110		M16	88 x 3	148	108	32,5	17	3	22	17	F07	6,8
50	50	95	47,5		165	125			102 x 3	156	116							9,6

Tabelle 3: torque and flow characteristics

Δp bar	M _d breakaway in Nm				flow k _v in m ³ /h		M _d max for stem Nm	nom. pressure	connection	flange (acc. DIN EN 1092-1) figure B 1 ¹⁾	Installation instructions
	15	25	40	50	DN	DN					
0	3	6	14	17	15	12	15	PN 40	nach DIN EN 1092-1	R _a max: 12,5 μm R _z max: 50 μm	The compact ball valve can be installed in any position and irrespective of flow direction.
10	4	10	24	27	25	60	125				
16	5	16	31	36	40	175	250				
25	7	20	39	55	50	360					
40	9	26	50	72							

Tabelle 4: connection and installation instructions

1) Other sealing surface shape and flange connections on request.



2) For operating conditions out of range please contact VH-Armaturen GmbH